

© COPYRIGHT ARCHITECTURAL DESIGN WORKS, INC. 2008
THIS DRAWING IS THE PROPERTY OF ARCHITECTURAL DESIGN WORKS, INC. AND SHALL NOT BE REPRODUCED, COPIED, OR TRANSMITTED IN ANY FORM OR BY ANY MEANS, ELECTRONIC OR MECHANICAL, INCLUDING PHOTOCOPYING, RECORDING, OR BY ANY INFORMATION STORAGE AND RETRIEVAL SYSTEM, WITHOUT THE WRITTEN PERMISSION OF ARCHITECTURAL DESIGN WORKS, INC. ANY VIOLATION OF THIS NOTICE IS SUBJECT TO PERSECUTION IN LAW.

HARFORD HOSPICE
2007 KLEIN PLAZA DRIVE
FOREST HILL, MD 21050

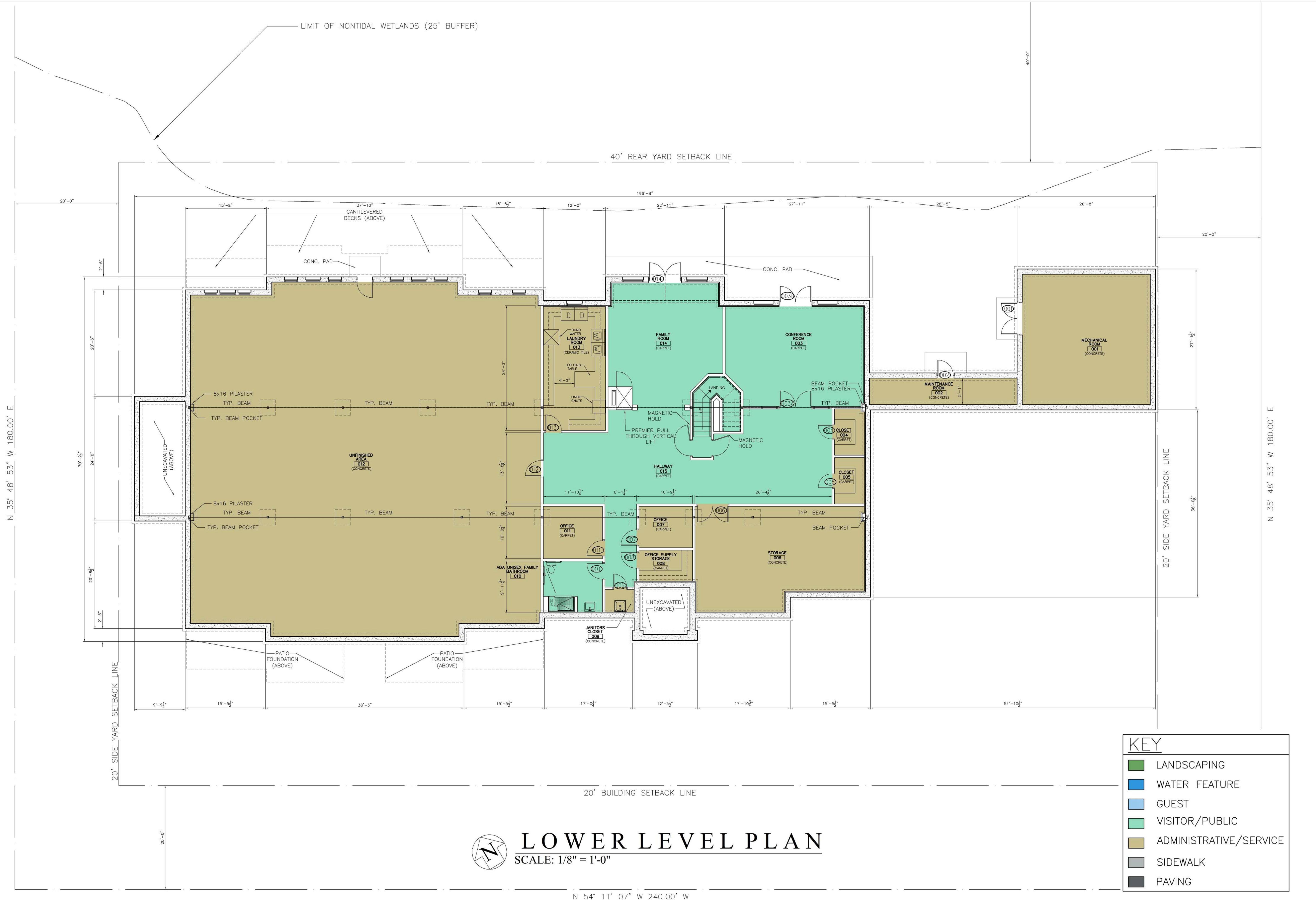
OWNER/DEVELOPER
HARFORD HOSPICE, INC.
TYLER RIDGE II A SUITE
8003 CORPORATE DRIVE
BALTIMORE, MD 21236

NO.	REVISIONS:	DATE
1	REVIEW SET	08-24-08
2	REVIEW SET	09-30-08
3	REVIEW SET	10-14-08
4	REVIEW SET	10-30-08
	REVIEW SET	11-17-08

FOR REVIEW
NOT RELEASED FOR CONSTRUCTION
FOR PERMIT
FOR CONSTRUCTION

DRAWN BY: D.B.W.
REVIEWED BY: W.P.T.
PROJECT NO.: 08701
DATE: 05-16-08
SCALE: AS SHOWN
DWG:
LOWER LEVEL PLAN

SHEET NO.:
DD-1.0



LOWER LEVEL PLAN
SCALE: 1/8" = 1'-0"

KEY

- LANDSCAPING
- WATER FEATURE
- GUEST
- VISITOR/PUBLIC
- ADMINISTRATIVE/SERVICE
- SIDEWALK
- PAVING

N 54° 11' 07" W 240.00' W